

# Waste Management

## From Challenge to Sustainability

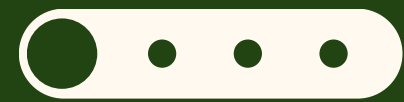




Previously, our waste management covered only general waste, recyclables, organic waste, and hazardous waste. Compared to today's diverse waste categories, it was far from meeting our needs.

# Previous Waste Management



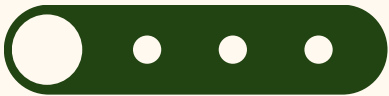


# Learning from Doi Tung



- 01 **Zero Waste** approach in operations
- 02 **Waste separation at the source** and final sorting at the waste management center
- 03 **Sorting waste**
- 04 **Producing eco-friendly**
- 05 **Adding value to waste** through reuse and recycling
- 06 **Plastic bag reduction** and management programs
- 07 **Oil-free waste incinerator technology**







# Waste Sorting System

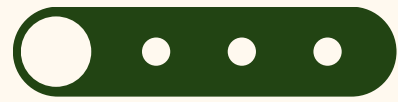


After visiting and learning from waste management best practices, we redesigned our system to suit our hotel's operations. Today, we operate our own waste sorting facility,

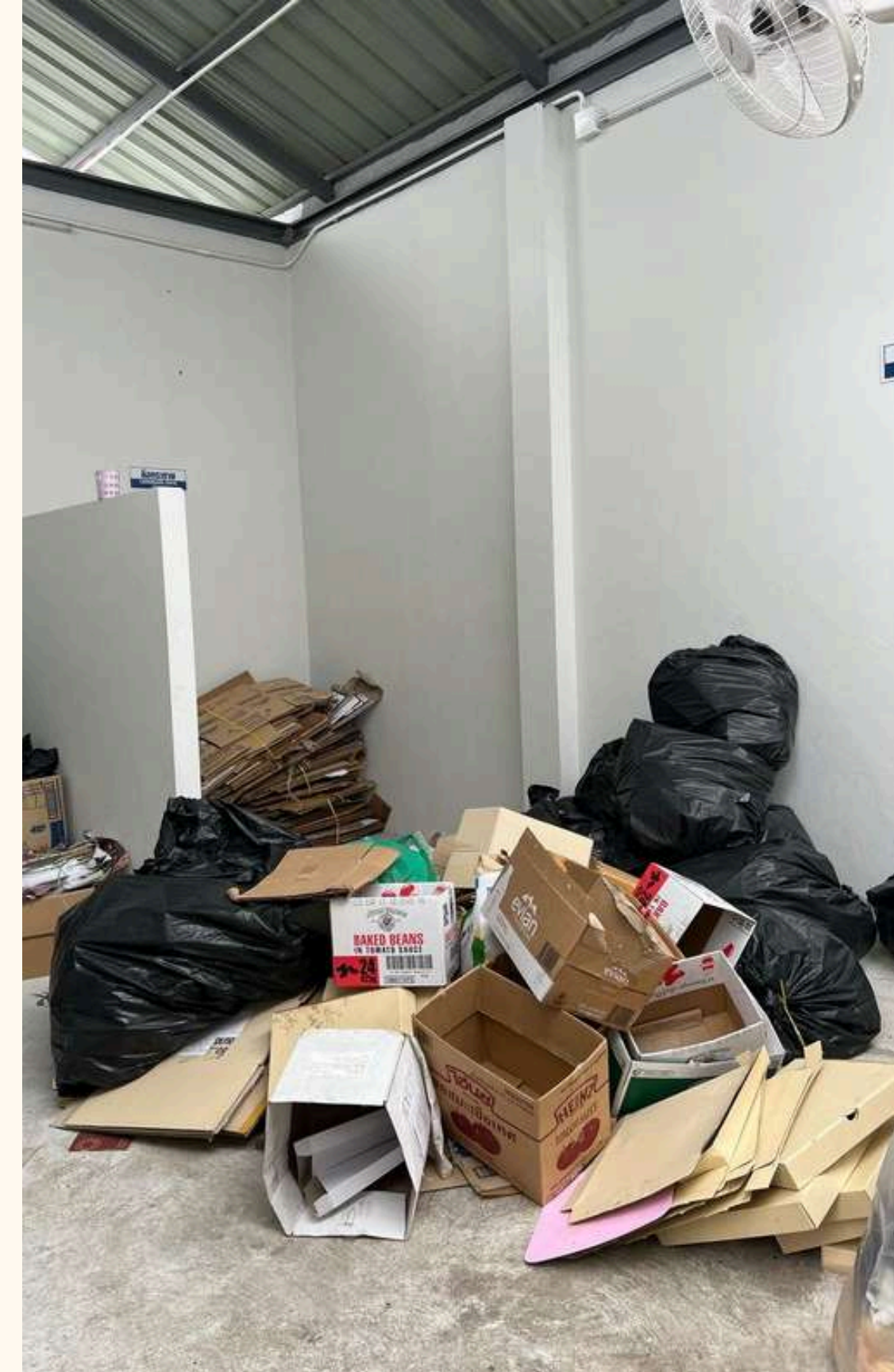
**capable of separating more than 46 types of waste.**







# Initial Waste Management





# Raising Awareness

We continuously educate our staff on waste separation, recycling, and sustainable practices.

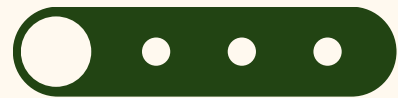




# After Waste Management







## 10 Types of general waste



## 36 Types of recyclables





## 10 Types of general waste

- Grease Waste
- Broken Plates
- Broken Glass
- Light Bulbs
- Unclaimed Customer Belongings
- Paint Cans
- Chemical Containers
- Infectious Waste
- Hazardous Waste
- General Waste



## 36 Types of recyclables

- Liquor Bottles
- Colored Glass Bottles
- Aluminum Cans
- Beer Bottles
- Toilet Paper Roll Bins
- Aluminum Bottle Caps
- Soft Drink / Beer Caps
- Toilet Paper Rolls
- Cardboard Boxes
- A4 Paper
- Aluminum Foil
- Sauce Cans
- Beer Crates
- Used Cooking Oil
- Empty Metal Can
- Paper Cups / Paper Food Containers
- Paper Scraps / White Envelopes
- Pens
- Drinking Straws
- Colored Paper
- Juice Cartons
- Clear Plastic
- Colored Plastic
- Plastic Bottle Caps
- Tin Cans
- Plastic Bags
- Film Rolls
- Aluminum
- Iron
- Rigid Plastic
- Motors
- Air Conditioner Radiators
- PVC Pipes
- Electrical Cables
- Batteries



# Organic Waste Management

Organic waste is now processed into high-quality compost, which we use for landscaping and gardening.





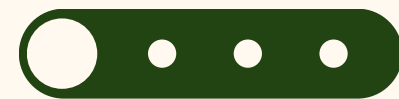


# Handling Non-Biodegradable Waste

**Non-biodegradable solid waste, such as coconut shells, coconut fronds, and branches, is now separated and processed using a solid waste shredder. This machine operates without the use of oil or electricity.**







# Reducing Incineration to just 9.94% in the past 6 months.



## **Phuket's incinerator is over capacity.**

only processing 900 tons a day, while the island generates over 1,000 tons daily, peaking at 1,400 tons during tourist season.





# Waste Reduction in 2025

From January to July 2025, we managed a total of

**740,577 kilograms of waste.**

**50.13% = Recyclable**

**39.93% = Reprocessed**

**9.94% = Disposal**

Month	Total Waste (kg)	Income from Recyclables (Baht)	Waste for Disposal %	Recyclable Waste %	Reprocessed Waste
Jan	116,073	67,901	11.48	46.71	41.81
Feb	104,001	66,820	9.94	48.24	41.82
Mar	105,862	80,422	9.13	52.24	38.63
Apr	120,900	54,965	8	49.24	42.76
May	91,844	40,519	12.91	50.86	36.23
Jun	107,048	37,750	11.53	50.51	37.96
Jul	94,849	45,505	7.11	54.01	38.88
Total	740,577	393,882	9.94	50.13	39.93



# Turning Waste into Value

From January to July 2025,  
our recycling activities  
generated a **total income of  
393,882 Baht.**

This revenue is allocated to our “**Waste Fund**” which is used to **organize staff activities, purchase gifts for employees, and continuously support environmental projects.**







“

Our biggest challenge was turning  
intention into action.

We did it by making waste management  
part of who we are.

”

---

Katathani Collection of Resorts